

MaxTM 3

ulrich*easy*INJECT

Contrast media injector for MRI and digital, contrast-enhanced mammography

New:
Digital, contrast-enhanced
mammography



24-hour multi-use
in MRI



Advantages at a glance



Quick and simple

- Set up just once daily
- Fast patient changeover
- Intuitive operator control concept



Cost-effective and efficient

- Low cost of disposables
- Optimized contrast media management
- Efficient workflows



Hygienic and safe

- Closed system: direct injection from the original media containers
- Automatic patient-side air monitoring
- SafeConnect with touch protection

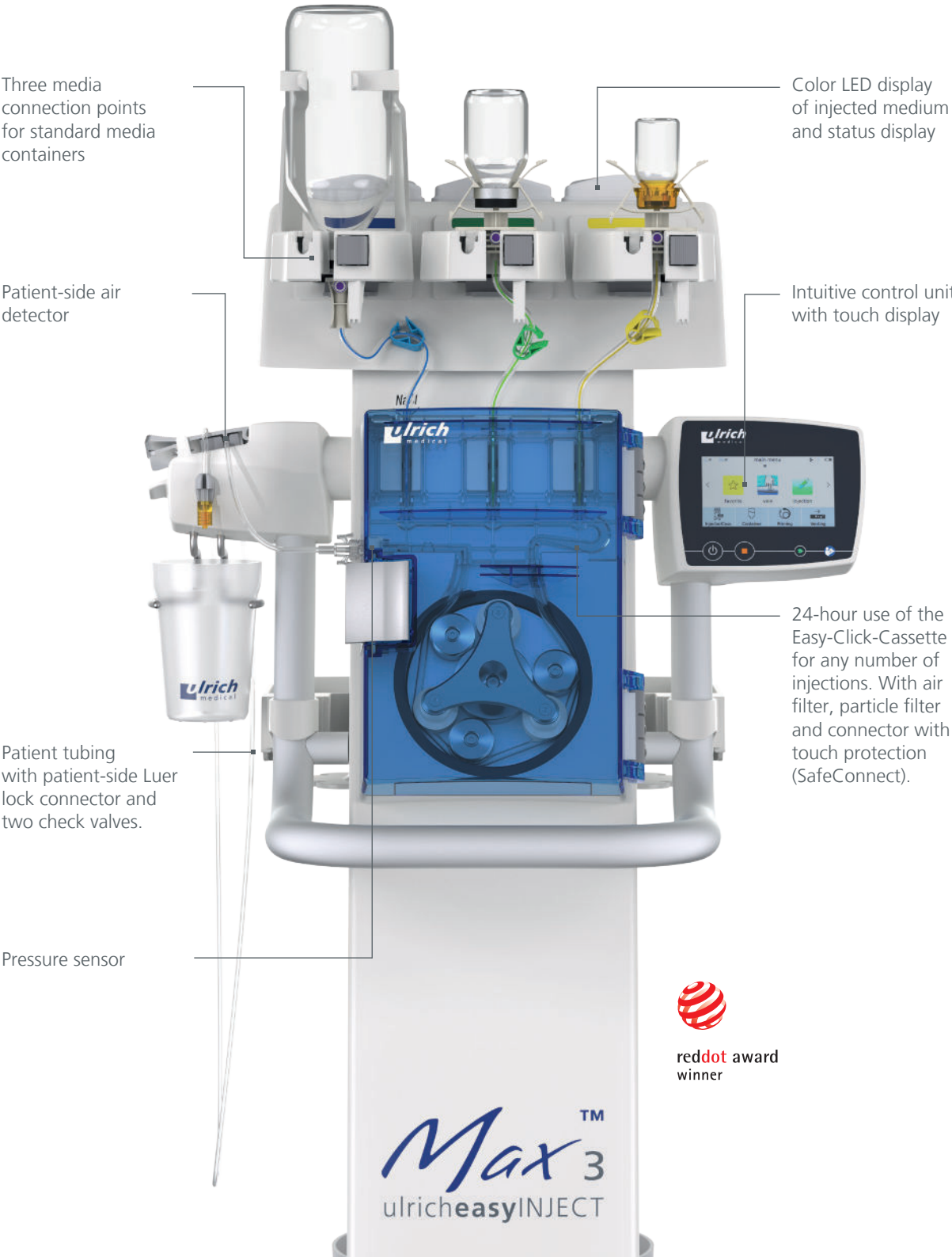
New

Digital, contrast-enhanced mammography



- Enables fast operation and patient-side injection start directly on the injector
- Compact device base ensures sufficient space in the mammography room
- Using a contrast media injector provides a continuous flow of contrast media
- CM bolus is administered accurately, which then increases the quality of the imaging
- Cordless device concept for free and flexible positioning of the injector in the mammography room

Innovation made in Germany



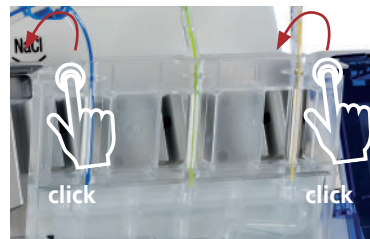
reddot award winner

Simple to use

- Set up just once daily
- 24-hour use of the Easy-Click-Cassette
- Fast patient changeover
- Intuitive operator control concept
- Optimized contrast media management by means of two contrast media connection points
- Cordless operation

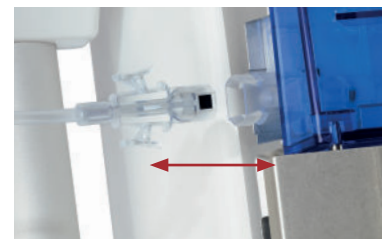
Set up made easy

- Insert Easy-Click-Cassette
- Connect patient tubing
- Attach media containers
- Done!



Patient tubing is changed over within a few seconds

- Detach patient tubing
- Connect new patient tubing
- Done!



Cost-effective & efficient

- Low cost of disposables
- Optimized contrast media management by using large containers
- Efficient workflows
- Minimal residual contrast medium due to automatic switchover from empty to full container (CM-Loop)

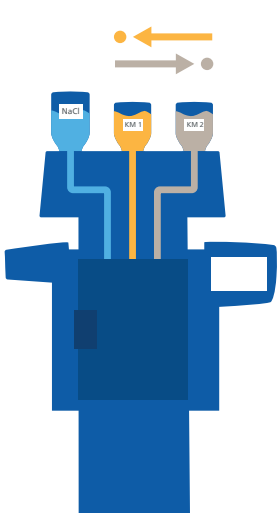
Focus on hygiene & safety

- SafeConnect with touch protection
- Easy-Click-Cassette approved for 24-hour use¹
- Reliable protection against retrograde contamination²
- Direct injection from the original media containers
- Patient-side air detector protects against air injection
- Closed system

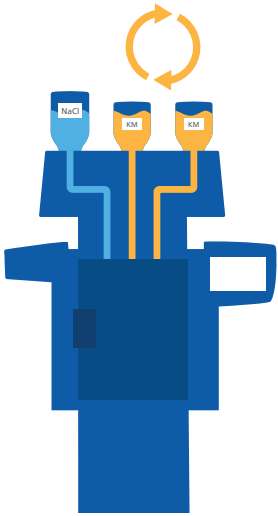
¹ Source: GLP-compliant study: "Microbiological Contamination Control Study of the ulricheasy-INJECT Max 3 System", report 12046467, dated: February 28, 2018, author: UL International GmbH (Grenzenstr. 13, 88416 Ochsenhausen, Germany); study not published, can be accessed upon request with nondisclosure agreement.

² Source: GLP-compliant study: "Virological evaluation of Retrograde Contamination Potential at the Pump Tubing Set (XD 8003) and the Patient Tubing Set (XD 2035) of the CT motion (XD 8000)", report 10874251 2.1, dated: Thursday, November 12, 2015, author: UL International GmbH (Grenzenstr. 13, 88416 Ochsenhausen, Germany); study not published, can be accessed upon request with nondisclosure agreement. The results of the non-clinical testing mentioned are applicable to the ulricheasyINJECT systems Max 3 and Max 2M as the physical barrier with respect to possible retrograde contamination is implemented in all of the systems by means of structurally identical two check valves.

Flexible CM management & simplified workflows



CM-Select
Selection of a second contrast medium



CM-Loop
Alternate switchover with two identical contrast media

Technical data overview

Dimensions (L x W x H) – without media rod	530 mm x 530 mm x 1372 mm
Weight	Approx. 40 kg
Power supply	Battery
Voltage supply (battery charging)	Voltage rating 100-240 VAC / 50/60 Hz
Media delivery	Roller pump
Flow rate	0.1 to 10 mL/s, in increments of 0.1 mL/s (MRI) 0.1 to 4 mL/s, in increments of 0.1 mL/s (contrast-enhanced mammography)
Maximum injection volume	400 mL/patient 1 mL – 10 mL, in increments of 0.1 mL > 10 mL – 100 mL, in increments of 0.5 mL > 100 mL – 400 mL, in increments of 1 mL
Reservoir capacity	Contrast media: max. 2 x 200 mL (MRI), max. 2 x 250 mL (contrast-enhanced mammography) NaCl 1 x 1,000 mL max. or 1 x 2,000 mL max. with a bag and optional IV pole
Adjustable pressure limit	2 - 14 bar in increments of 0.1 bar (29 – 203 psi in increments of 1 psi)
Air monitoring	3 detectors for the media supply tubing, 1 detector for the Easy-Click-Cassette and patient tubing
Pressure monitoring	1 pressure sensor
User interfaces	Terminal: 12" color TFT touch screen. Injector: 4" color TFT touch screen
Data import and export	USB interface
Data transfer injector - terminal	WLAN (802.11 b/g/n)
Number of boli (phases) per injection program	40 max.
Number of injection programs that can be saved	200 max.
Pressure curve	Real-time display of the injection pressure curve
Software functions (standard)	CM-Loop: Alternate switchover with two identical contrast media Display of remaining quantity NaCl backup Manual pause, time-controlled pause Timer Elapsed time
Software options	CM-Select: - Careful selection of a second contrast medium (two different contrast media are available simultaneously) - Possibility to change the type of contrast medium on the media slots by means of NaCl rinsing (no need to change the Easy-Click-Cassette)
Injector accessories	Convenience package: Media rod, waste bin and tray
Disposables	Patient tubing 2.5 m or 3.2 m Easy-Click-Cassette with holder s or holder l, Adapter rings for small bottles

Supporting member of the German Society for Hospital Hygiene (Deutsche Gesellschaft für Krankenhaushygiene e.V.)

**Over a Century
of Innovation**

patented
or/and
pat. pend.



ulrich GmbH & Co. KG | Buchbrunnenweg 12 | 89081 Ulm | Germany
Phone: +49 731 9654-0 | Fax: +49 731 9654-199
injectors@ulrichmedical.com | www.ulrichmedical.com